



## **Bodybuilder's Bulletin**

**14 April 2014**

**Bulletin No. 135**

**ABBI (Advanced BodyBuilder Interface) - Newsletter**

Please find a copy of the latest ABBI Newsletter from Munich attached.

This highlights the latest changes that have been made to the web portal to improve registration, usability and navigation and changes to the MANTED website.

*Should you have any queries on the above, please contact Engineering on 01793 448170.*

**Please circulate and then retain in the Body Builders Manual.**



# Newsletter for our body builders

April 2014



Newsletter for our body builders  
April 2014



## Contents

<b>ABBI</b>	<b>4</b>
Display of orders .....	4
Creating vehicles with the VIN number .....	5
<b>Body builder certification</b>	<b>6</b>
The certification process .....	6
<b>MANTED</b>	<b>8</b>
Accessing MANTED from ABBI.....	8
MANTED news up to March 2014 .....	9
<b>MANEC Truck</b>	<b>10</b>
Changes to equipment and vehicle models .....	10
MANEC Truck registration.....	13
<b>By the way, did you know ...?</b>	<b>14</b>
Speed .....	14
<b>Any more questions?</b>	<b>14</b>
Your ABBI and Certification Team .....	14



Dear ABBI user,  
Dear ABBI user,  
Dear business partner,

We are happy to send you the latest issue of the **Newsletter for our body builders** in its new look.

Together with this new appearance we are presenting an expanded range of topics:

- ABBI
- Body builder certification
- MANTED
- MANEC Truck and
- "By the way, did you know...?", our section with useful hints.

With the new design of the Newsletter we hope you will find that information, innovations and useful hints are even more clearly presented.

If you feel that certain topics have not been dealt with or if there's something on your mind, please don't hesitate to contact us.



## ABBI

### Display of orders

ABBI has been online since 2009 and some very long vehicle lists have been created in that time.

With the "Display of orders" function you can now filter the lists and decide for yourself the age of the orders to be displayed:



Fig. 1. Display of orders in the vehicle list: You select the age of the orders to be displayed.

#### How and where do I select it?

Menu: Vehicle list:

and "Edit list", "Print/export" and "Find" all contain the new selection function "Display of orders".

This makes your vehicle list clearer and more up-to-date.



## Creating vehicles with the VIN number

A new feature is that in future, you will also be able to create orders on the basis of the VIN number. In addition, you are also able to create orders by using the order number in combination with the short vehicle production number:

- **VIN number**
- **In Combination: Order number (without blanks or special characters such as "-" or "/") and short vehicle production number (without blanks or special characters such as "-" or "/")**

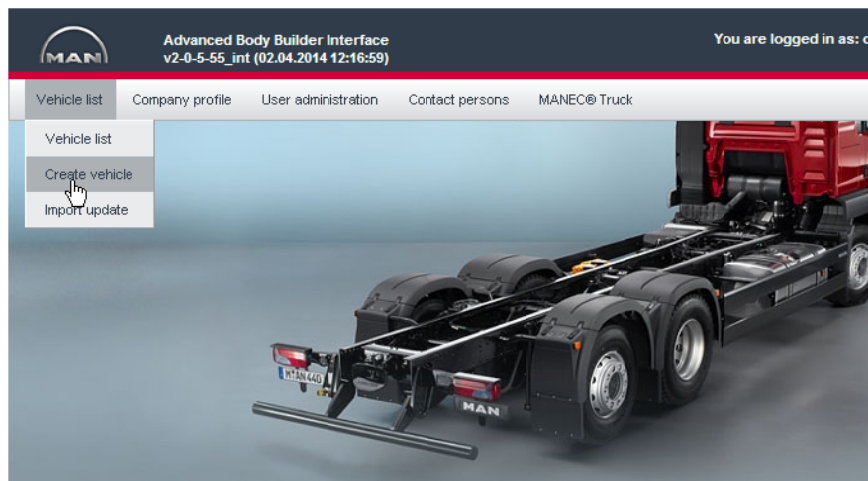


Fig. 2. Create vehicle: for orders that do not automatically appear in your vehicle list



Fig. 3. Create vehicle: VIN (as new criterion!), vehicle production number or order number

### Where do I find the menu for creating orders?

Menu: Vehicle list: Create vehicle

## Body builder certification

### The certification process

ABBI offers you the opportunity of becoming an MAN-certified company. With this certification you will become known and recognised throughout MAN.



Fig. 4. Our certification program's certificate

#### How you benefit from certification

- Globally uniform and professional cooperation
- Reduction of tied-up capital thanks to shorter downtimes
- Additional information relevant to your business
- Direct contact persons
- Better sales structures and simplified order processing:
- Expansion of business relationships
- New advertising possibility

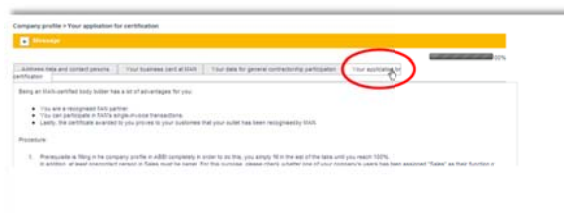


Fig. 5. You will find the application for certification in the company profile.



#### How and where can I register for certification?

Menu: Company profile:

4th tab: "Your application for certification"

#### What do you have to do?

- You update your company profile until you reach 100%.
- You start the program with a mouse click (Menu: Company profile).
- We coordinate with you in organising quality acceptance.
- You then only have to sign the certification agreement and send it to MAN.

## MANTED

### Accessing MANTED from ABBI

Attached to this issue you will again find innovations from our MANTED portal, which you access from ABBI:

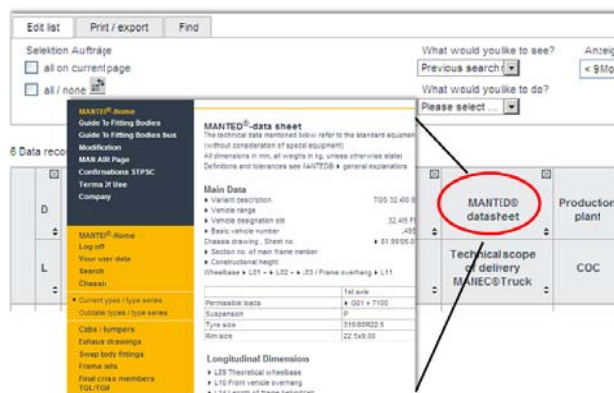


Fig. 6. ABBI link to MANTED - our technical portal

Enter your MANTED ID in your ABBI user profile and you have direct access to MANTED from ABBI

## MANTED news up to March 2014

You will find the following topics on the MANTED portal home page:

- MAN Guidelines to fitting bodies - TGL/TGM, Edition 2014 V1.0, available in German and English
- MAN Guidelines to fitting bodies - TGS/TGX, Edition 2014 V1.0, available in German and English
- MAN Guidelines to fitting bodies - PTOs, Edition 2014 V1.0, available in German and English
- MAN Guidelines to fitting bodies - TG, Edition 2014 V1.0, available in German and English



## MANEC Truck

### Changes to equipment and vehicle models

#### New assignment of propshafts/PTO

Due to reworking of the propshaft line, the universal joints and propshafts in certain TG vehicles are larger. This reduces the space available for attaching hydraulic pumps and flanges to the PTOs of certain models.

**The larger universal joints of "propshafts for increased load profiles" reduce the attachment space for PTOs. For this reason, some variants (primarily variants for direct assembly) are no longer available.**



Fig. 7. On certain models, the attachment space for PTOs at the end of the gearbox is restricted by the larger universal joints.

The following models are affected by the change:

- TGS, TGS WW / WW-CKD
  - Three-axle traction 6x4, 6x6
  - Four-axle traction 8x4, 8x6, 8x8

Vehicles fitted with HPD1353/HP1333 tandem-axle units are not affected.





Effects on the affected vehicles:

- The power take-off NH/1 (1,000 Nm in continuous operation) will be replaced to approximately 80% by NH/4 (430 Nm, not for continuous operation, short-term operation up to 60 minutes).
- In isolated cases, the N./10 (730 Nm in continuous operation) may be used.
- In certain cases (e.g. with dual PTOs), the propshaft for the standard load profile is also installed in the above-mentioned models. It is then mandatory to replace the propshaft at 200,000 km.

The illustrations below show the PTO variants whose space is impinged upon by the greater space required for the rotation of the universal joints. These PTOs are coloured yellow and red, while their possible replacements are coloured green.

Do you have detailed questions in this regard?

Please also note the special Newsletter from November 2013 or get in touch with your contact person.

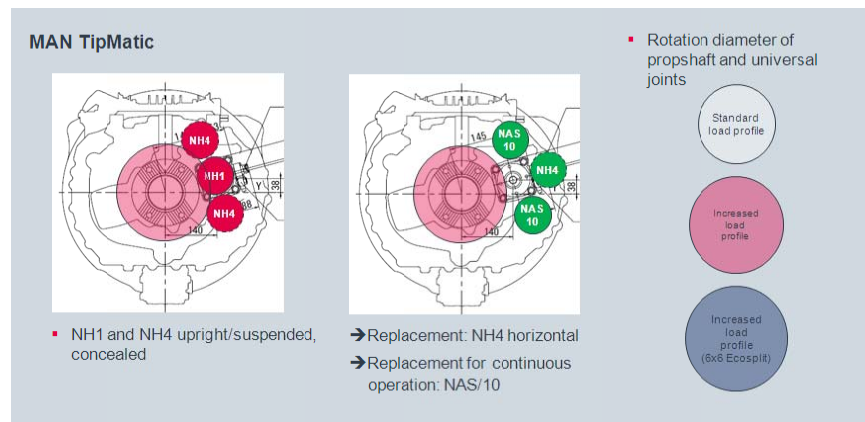


Fig. 8. PTOs whose space is impinged upon by the "propshaft with increased load profile" and their replacements for MAN TipMatic gearboxes

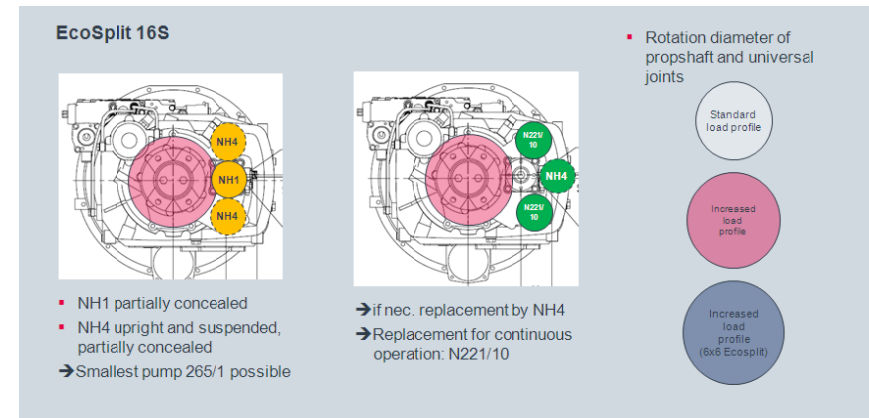


Fig. 9. PTOs whose space is impinged upon by the "propshaft with increased load profile" and their replacements for MAN EcoSplit gearboxes

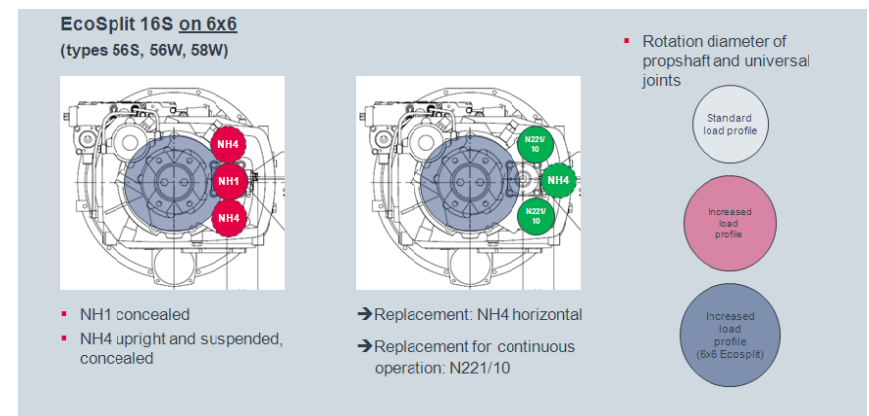


Fig. 10. PTOs on 6x6 all-wheel-drive vehicles whose space is impinged upon by the "propshaft with increased load profile" and their replacements for MAN EcoSplit gearboxes



## MANEC Truck registration

As announced in our most recent Newsletter of December 2013, one-time registration was necessary in order to be able to use MANEC Truck Online, our online Configurator.

The background to this registration campaign is the move of MANEC® Truck Online to a different server.

We hope that this one-time registration did not cause you any great inconvenience. Since then, the move has almost been completed and we assume that you will now be able to use our online Configurator again without any complications:

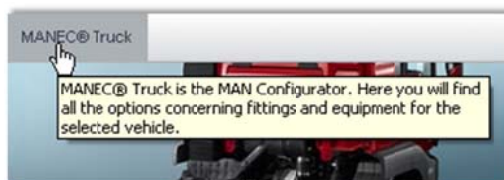


Fig. 11. MANEC® Truck Online:  
accessible from the menu bar or  
the vehicle list (technical scope of  
delivery MANEC Truck)

If you have not yet registered, please contact us.



## By the way, did you know ...?

### Speed

One issue we are always at work on is making ABBI faster.

After we were able to report in our December Newsletter that the reaction time of the "Scope of delivery" menu had been speeded up successfully, our IT developers turned their attention to the vehicle list.



Fig. 12. ABBI vehicle list with improved reaction time

The vehicle list is now displayed twice as fast as in the previous version.

## Any more questions?

### Your ABBI and Certification Team

As you know, we would be glad to answer any questions you may have concerning **ABBI**. This now applies equally to questions concerning the **certification** of your company.





## Newsletter for our body builders April 2014



Your ABBI and Certification Team

**Alexander Lenzser**

**Andreas Vieweg**

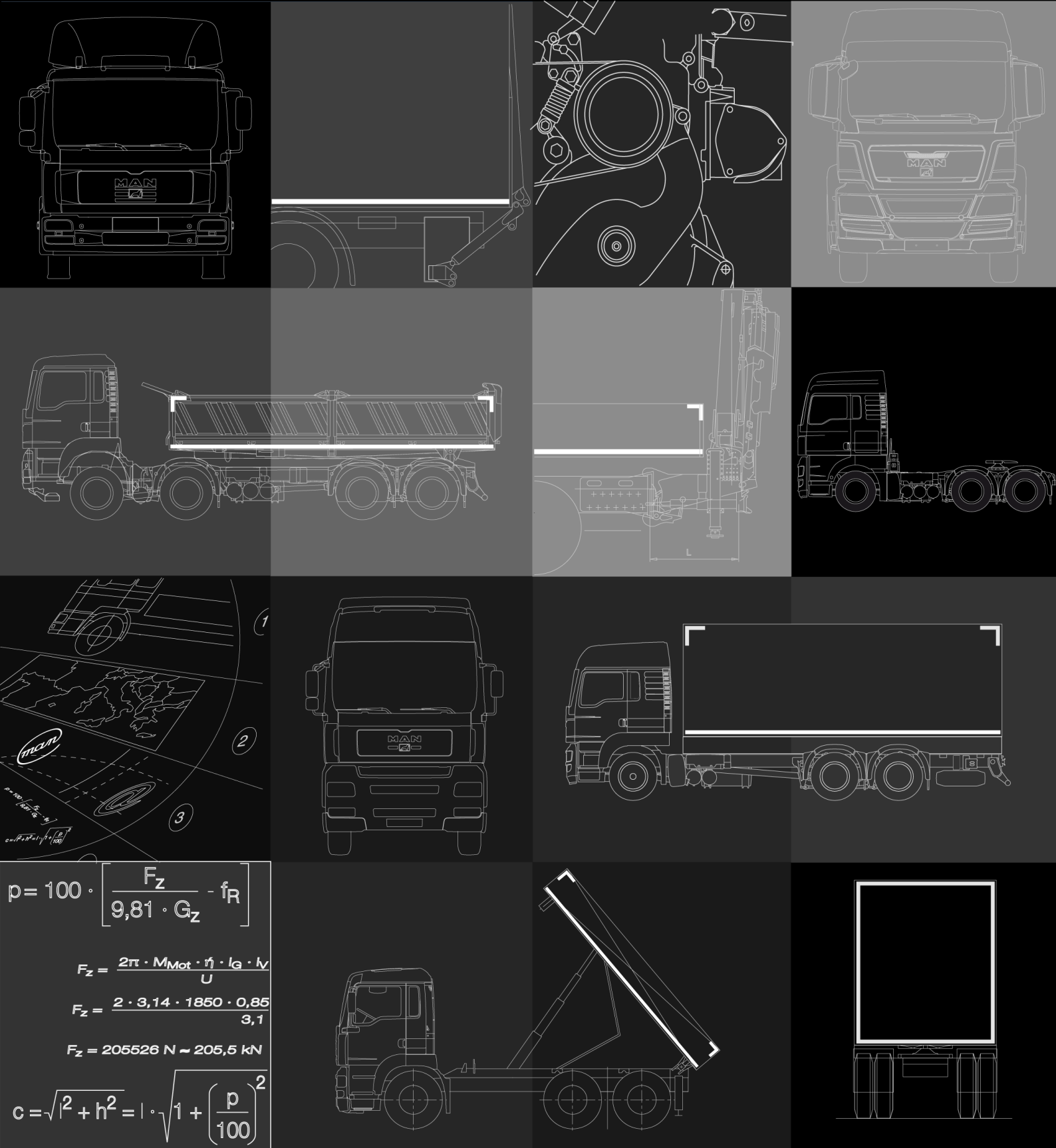
**Andreas Viemann**

**Henning Pauli**



**ABBI**  
Advanced Bodybuilder Interface  
Das Aufbauteilerportal

**Munich, April 2014**



$$p = 100 \cdot \left[ \frac{F_z}{9,81 \cdot G_z} - f_R \right]$$

$$F_z = \frac{2\pi \cdot M_{Mot} \cdot \eta \cdot l_g \cdot l_v}{U}$$

$$F_z = \frac{2 \cdot 3,14 \cdot 1850 \cdot 0,85}{3,1}$$

$$F_z = 205526 \text{ N} \approx 205,5 \text{ kN}$$

$$c = \sqrt{l^2 + h^2} = l \cdot \sqrt{1 + \left( \frac{p}{100} \right)^2}$$

# MAN Guidelines to fitting bodies

## News March 2014

Engineering the Future— since 1758

**MAN Truck & Bus AG**



# MAN Guidelines to Fitting bodies - News



## Content

### Overview

---

#### Contemporary Issues

Update Guidelines to Fitting Bodies, TGL/M, TGS/X Edition 2014 V1.0

New chapter structure MAN Guidelines to Fitting Bodies

*If you have any questions or suggestion please do not hesitate to contact us.*  
Thomas Bichl (STPST) [thomas.bichl@man.eu](mailto:thomas.bichl@man.eu)

089-1580-67066

# MAN Guidelines to Fitting bodies - News



## Contemporary Issues

### 1) Update of the MAN Guidelines to Fitting bodies TGL/M, TGS/X Edition 2014 V1.0

The first major update of the MAN Guidelines to Fitting Bodies for TGL / M, TGS / X, and supplementary booklets coupling devices TG and power take-offs were published on March 18, 2014 on [www.manted.de](http://www.manted.de).

For the first time all issues were published in the English translation simultaneously.

### 2) New Chapter structure of MAN Guideline to Fitting Bodies Truck

With the first major update of the MAN Guidelines to Fitting Bodies in March 2014, Edition 2014 V1.0, the new book and chapter structure is published. Evaluations gave an analogy between content in the books TGL / M and TGS / X of about 86 %. The structural conformity was even higher with approximately 97 %.



#### Main topics of the structure revision:

- Increasing the handling
- minimizing the error ratio
- reducing the cost of publication
- minimize the reaction time (update cycles)
- preparation for future requirements

In the previous chapter structure and as an example, information about the chassis had been spread over five different chapters. Further information was also found in the supplementary booklets PTOs, interfaces TG and TG connecting devices. This dispersal of information has been summarized now.

For example: All specifications relating to chassis could be found now in Chapter III Chassis.



#### Important:

With the publication of MAN guide Edition 2014 V1.0 the separate booklet "interfaces TG" is omitted, since these contents have been incorporated into the main issue.

The new chapter structure of the MAN Guidelines to Fitting Bodies TGL/M, TGS/X is as follows:

- Chapter I) Applicability and legal agreements
- Chapter II) Product identification
- Chapter III Chassis
- Chapter IV) Body
- Chapter V) Calculations

As usual, the MAN Guidelines to Fitting Bodies will be available as PDF and HTML version.